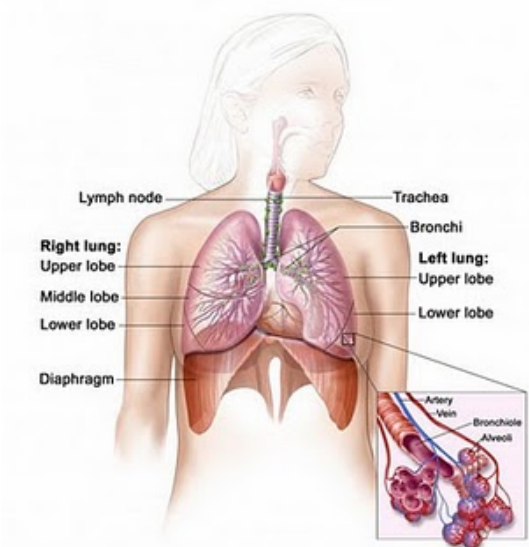


Useful Info on Malignant Mesothelioma.

Written by mesothelioma-news

Saturday, 29 May 2010 05:10 - Last Updated Tuesday, 26 October 2010 10:55



In the case of **mesothelioma cancer**, a rare type is known to manifest: the malignant **mesothelioma**

This type involves an affliction of the thin wall of the cells that belong to the internal organs and their structures. The lining that structures the organs is called mesothelium, from here comes the name of this type of cancer, which is known to be expressed in three main ways. The malignant

mesothelioma

affecting the lining of the lungs is called pleural mesothelioma, the lining of the peritoneum - the abdomen - being affected generates the

peritoneal mesothelioma

and the lining of the heart once affected leads to malignant form of

pericardial mesothelioma

It has been discovered that the actual cause as well as the main one to lead to this condition is the inhalation of asbestos fibers. Asbestos is a material which in its natural form is a mineral, and has proved high features of strength regarding the fireproof insulation. This was the reason that attracted many construction industries to adopt it in their field of work. Due to the fact that once handled, the material liberates many macroscopic fibers into the air, these fibers are easy to be breathed by the one who manipulates plenty of the products containing the mineral in question. Once they are inhaled, these fibers can not be eliminated by the body's functions, and as such they end up by being absorbed mainly in the lungs lining, and after that spreading to the abdomen or heart lining structure.

To detect this form of mesothelioma cancer is very hard, due to the fact that its symptoms are barely manifesting especially in the manifestation of a malignant mesothelioma. A patient having this stage of cancer inside can barely point out symptoms, and as such he is prone to carry the disease till it becomes benign. Once the malignant form has already affected the organ, the patient can live many months before presenting the real symptoms, which unfortunately these can lead to a shorter period of time to being lethal. In order to avoid this situation, try to pay attention to the following symptoms, and as soon you have noticed them manifesting go for the professional assistance of a medical doctor. The symptoms of malignant

Useful Info on Malignant Mesothelioma.

Written by mesothelioma-news

Saturday, 29 May 2010 05:10 - Last Updated Tuesday, 26 October 2010 10:55

mesothelioma are: weight loss, nausea, shortness of breath, vomiting, constant coughing (it can occur with or without blood), stomach pains, chest pain, and some cases of swelling face and arms. Due to the fact that these symptoms are not very special, as they happen very often and not necessarily to present the malignant form of mesothelioma, they are very often ignored by the people to present them. The same reason is what draws doctors to misinterpret the diagnose and prescribe other treatments instead. An accurate observation is required in these cases for the malignant form of mesothelioma to be discovered, in this way the treatment could actually be performed with successful outcomes.